

# DS-250

# 250 WATT

## UNIVERSAL INPUT (90-264VAC)

MADE IN THE U.S.A.

VISIT US ON THE WEB AT <http://www.switchpwr.com>



## HIGH RELIABILITY GREATER THAN 120,000 HRS. MTBF



	OUTPUT VOLTAGE (VDC)	OUTPUT AMPERS (MAX)
V1	5	26
V2	-5	5
V3	9	3.5
V4	-9	7.5

### FEATURES:

100 KHz Operation

Sizes 6" x 3" x 10"

70% Efficiency Typical

Meets EN55022 Level A / FCC Class A

Universal Input 90-264 VAC

N+1 Redundancy with built-in oring diodes

Current Share signal provided

AC Power Fail LED to indicate power supply status - Green LED indicates Good AC

AMP Mate-N-Lok input and output connectors for fast and easy installation

#### EAST COAST:

3601 VETERANS HIGHWAY  
RONKONKOMA, NEW YORK 11779

TEL (516) 981-7231 FAX (516) 981-7266

#### WEST COAST:

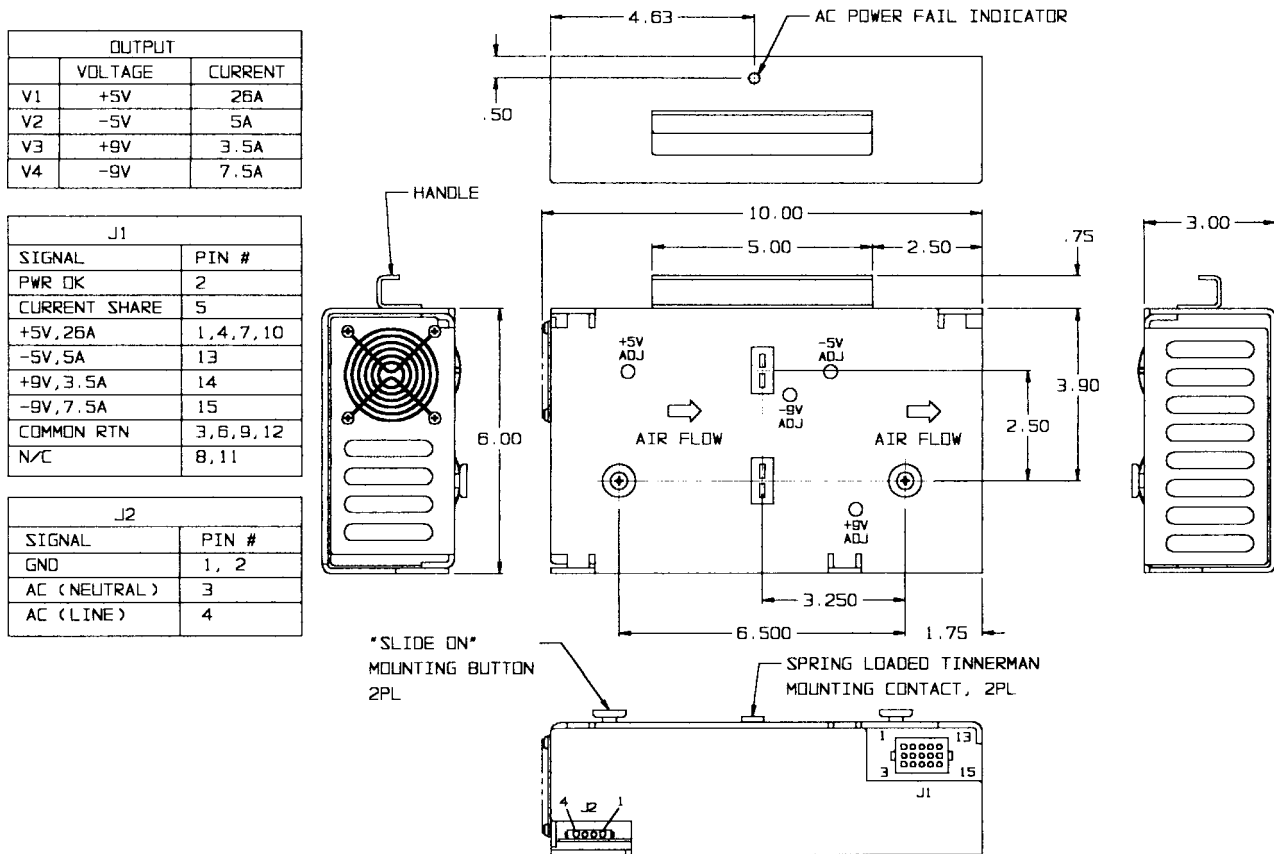
599 N. MATHILDA AVENUE  
SUNNYVALE, CALIFORNIA 94086

TEL (408) 732-1230 FAX (408) 732-5712



# DS-250 UNIVERSAL INPUT 250 WATT

\*IN .PDF FORMAT, PRINT OR ZOOM TO SEE DRAWING



<b>Nominal Input Voltage</b>	115-240 VAC.	<b>Overshoot</b>	No turn-on or turn-off overshoot.
<b>Frequency</b>	47-63 Hz 400Hz. available.	<b>Overvoltage Protection</b>	V1 voltage clamp factory set at 20% to 30% above output voltage. V2, V3, V4 failsafe design.
<b>Operational Input Voltage Range</b>	90 to 264 VAC	<b>Overtemperature Protection</b>	Unit shuts down if overheated. Automatic recovery.
<b>Inrush Current</b>	Less than 40 A for 4 msec. @ 115 VAC, or 80 amperes @ 230 VAC.	<b>Cooling</b>	Equipped with integral fan.
<b>Fusing</b>	6.3 Ampere, 250 VAC, Internal ceramic body fuse.	<b>Input/Output Isolation</b>	4242 VDC, SELV construction.
<b>Efficiency</b>	70% typical.	<b>Power OK</b>	Standard - Norm logic "1" Monitors all outputs.
<b>Turn on time</b>	Less than 500 msec.	<b>Operating Temperature</b>	-20°C to 50°C full output. 50°C to 75°C, derate 2%/°C.
<b>Load Regulation</b>	1% for 10% to 100% load changes, all outputs. 10% min. load required on V1 for max load reg. on outputs V2 to V4.	<b>Stability</b>	All outputs 0.5% for 8 hrs. after 1 hour warm-up.
<b>Line Regulation</b>	± 0.5% over operating line range, all outputs.	<b>Humidity</b>	Up to 95% non-condensing.
<b>Ripple &amp; Noise</b>	1% ripple, 1% noise or 100mV which ever is greater. 20MHz bandwidth.	<b>EMI</b>	Meets FCC Class A and EN55022 Level A
<b>Transient Response</b>	Output maximum excursion of ± 5% for 25% load step. Recovery less than 500 µsec.	<b>Safety</b>	UL 1950, CSA No. 234, EN 60950
<b>Short Circuit and Overload Protection</b>	All outputs are protected from short circuit and overload. Automatic recovery.	<b>Size</b>	6" by 3" x 10".
		<b>Weight</b>	6 lbs.