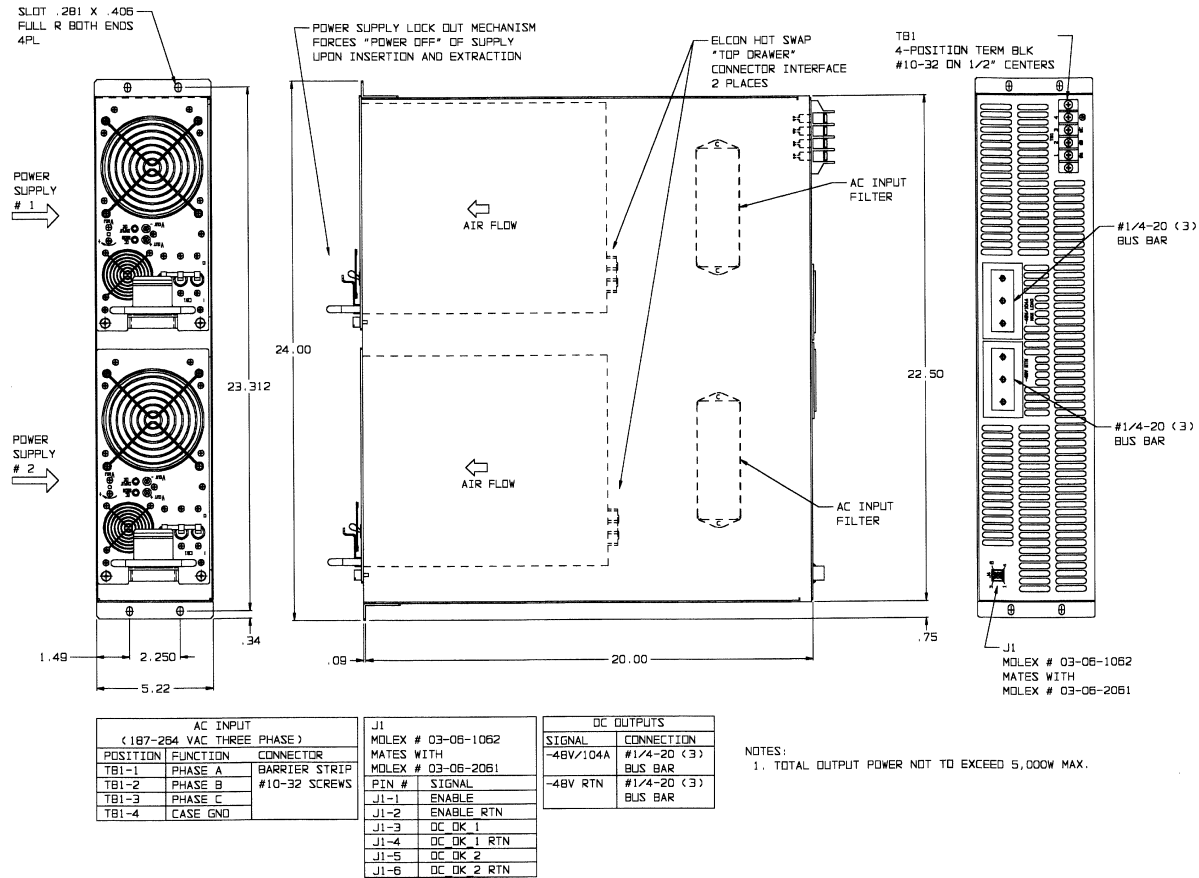


HOT SWAP RACK MODEL FERX-5000



- ◆ 5,000 WATT HOT SWAP RACK SYSTEM USING TWO FESX-5000P MODULES
- ◆ 24" RACK MOUNTABLE
- ◆ POWER FACTOR CORRECTED INPUT, 187-264VAC THREE PHASE INPUT
- ◆ MOUNTING RAILS NOT SHOWN ARE INCLUDED WITH SYSTEM
- ◆ LEDS INCLUDED INDICATE INDIVIDUAL POWER SUPPLY STATUS
- ◆ N+1 REDUNDANCY PROVIDED WITH INTEGRAL "ORING" DIODES
- ◆ EASY INPUT / OUTPUT CONNECTIONS PROVIDED



REV: -