

GS SERIES

1000 WATT

ONE TO FIVE OUTPUTS

MADE IN THE U.S.A.

VISIT US ON THE WEB AT <http://www.switchpwr.com>



HIGH RELIABILITY GREATER THAN 90,000 HRS. MTBF



FEATURES:

Proven Modular Design
Sizes 5.0" x 8.0" x 12.0"
75% Efficiency Typical
Meets EN55022 Level A / FCC Class A
Isolated Outputs
Current Share
Power Good Signal
Power Fail

Configure Your Output Requirements:

*Contact factory for additional output variations

	OUTPUT VOLTAGE (VDC)	OUTPUT AMPERS (MAX)	OUTPUT POWER (WATTS)
V1	2 to 48	150	850
V2	2 to 24	40	200
V3	2 to 24	15	150
V4	2 to 24	15	150
V5	2 to 24	6	72
TOTAL OUTPUT POWER NOT TO EXCEED 1000 WATTS			

EAST COAST:

3601 VETERANS HIGHWAY
RONKONKOMA, NEW YORK 11779
TEL (516) 981-7231 FAX (516) 981-7266

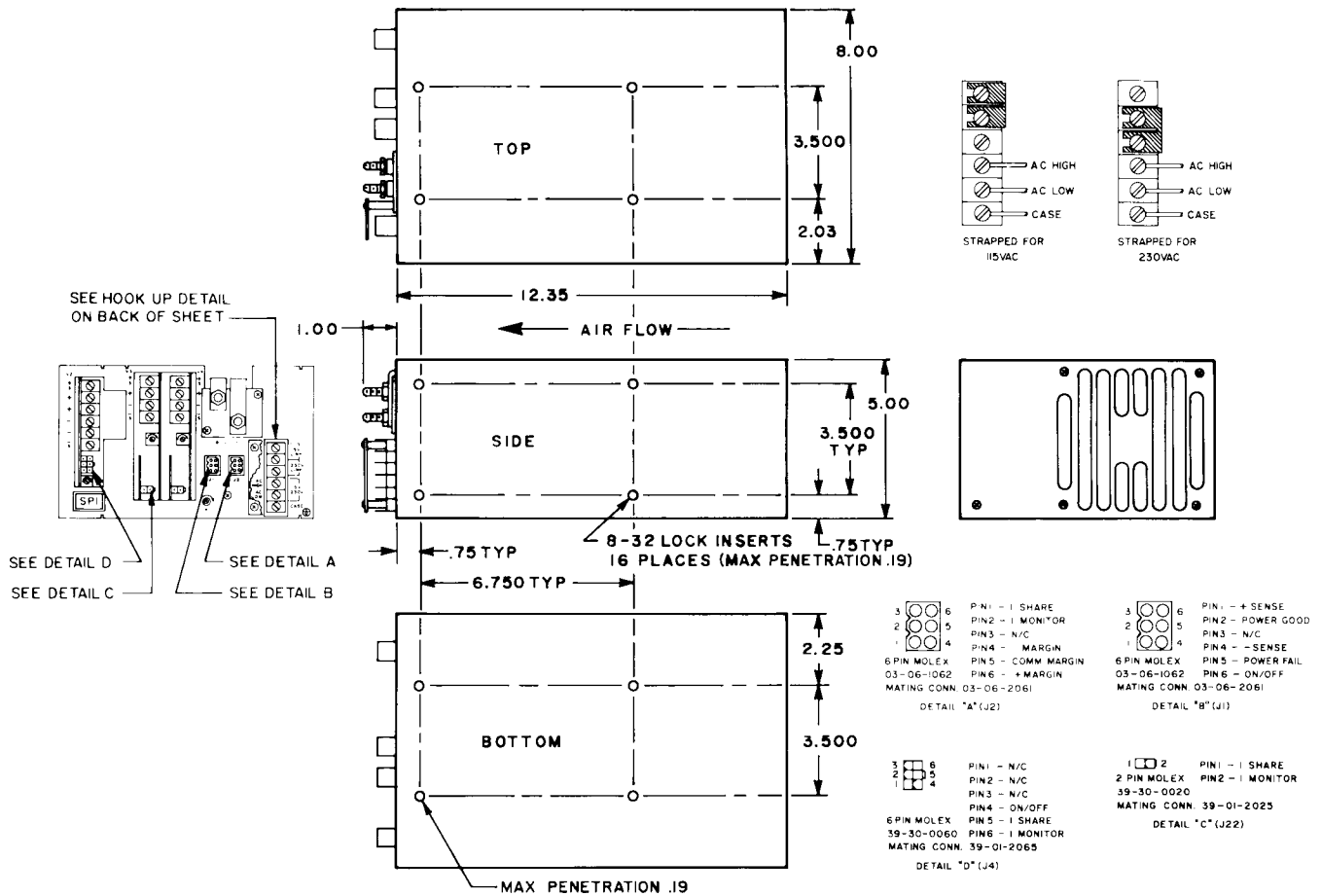
WEST COAST:

599 N. MATHILDA AVENUE
SUNNYVALE, CALIFORNIA 94086
TEL (408) 732-1230 FAX (408) 732-5712



GS SERIES 1000 WATT

* IN .PDF FORMAT, PRINT OR ZOOM TO SEE DRAWING



Nominal Input Voltage	115/230 VAC (User Selectable)	Overshoot	No turn-on or turn-off overshoot.
Frequency	47-63 Hz 400Hz. available.	Overvoltage Protection	V1, V2 voltage clamp factory set at 20% to 30% above output voltage. V3, V4, V5 failsafe design.
Operational Input Voltage Range	90 to 132 VAC or 180 to 264 VAC.	Overtemperature Protection	Unit shuts down if overheated. Automatic recovery.
Inrush Current	Less than 4 msec 80 amperes @ 115 VAC, or 160 amperes @ 230 VAC.	Cooling	Internal fan provides cooling.
Fusing	20 Ampere, 250 VAC, Internal fibre body fuse.	Input/Output Isolation	4242VDC, SELV construction.
Efficiency	75% typical.	Remote Sense V1, V2 Output	Up to 0.5 volts total in load.
Turn on time	Less than 150 msec.	Remote On/Off Power Good and Power Fail	Standard.
Load Regulation	0.5% for 10% to 100% load changes, all outputs. 10% min. load required on V1 for max load reg. on outputs V2 to V5.	Operating Temperature	-20°C to 50°C full output. 50°C to 75°C, derate 2%/°C.
Line Regulation	± 0.5% over operating line range, all outputs.	Stability	All outputs 0.5% for 8 hrs. after 1 hour warm-up.
Ripple & Noise	1% of output voltage, peak to peak.	Humidity	Up to 95% non-condensing.
Transient Response V1	Output maximum excursion of ± 5% for 25% load step. Recovery less than 500 µsec.	EMI	Meets FCC Class A and EN55022 Level A
Transient Response V2-V5	Output maximum excursion of ± 2% for 25% load step. Recovery less than 500 µsec.	Size	5.0" by 8.0" x 12.0".
Short Circuit and Overload Protection	All outputs are protected from short circuit and overload. Automatic recovery.	Weight	14 lbs.