

# HSO-250

250 WATT **HOT SWAP**

POWER FACTOR CORRECTED EN60555-2 COMPLIANT

MADE IN THE U.S.A. VISIT US ON THE WEB AT <http://www.switchpwr.com>



**HIGH RELIABILITY GREATER THAN 90,000 HRS. MTBF  
(500,000 HRS. IN REDUNDANCY)**



## FEATURES:

- 100 KHz Operation
- Sizes 6.58" x 3.36" x 9.39"
- 75% Efficiency Typical
- Meets EN55022 Level A / FCC Class A
- Isolated Outputs
- Current Share
- Universal Input 90-264 VAC
- N+1 Redundancy with built-in oring diodes
- Elcon connector plugs easily into backplane
- Fast and Easy Installation

	OUTPUT VOLTAGE (VDC)	OUTPUT AMPERS (MAX)	OUTPUT POWER (WATTS)
V1	2-48	40	250
V2	2-48	4	48

### EAST COAST:

3601 VETERANS HIGHWAY  
RONKONKOMA, NEW YORK 11779  
TEL (516) 981-7231 FAX (516) 981-7266

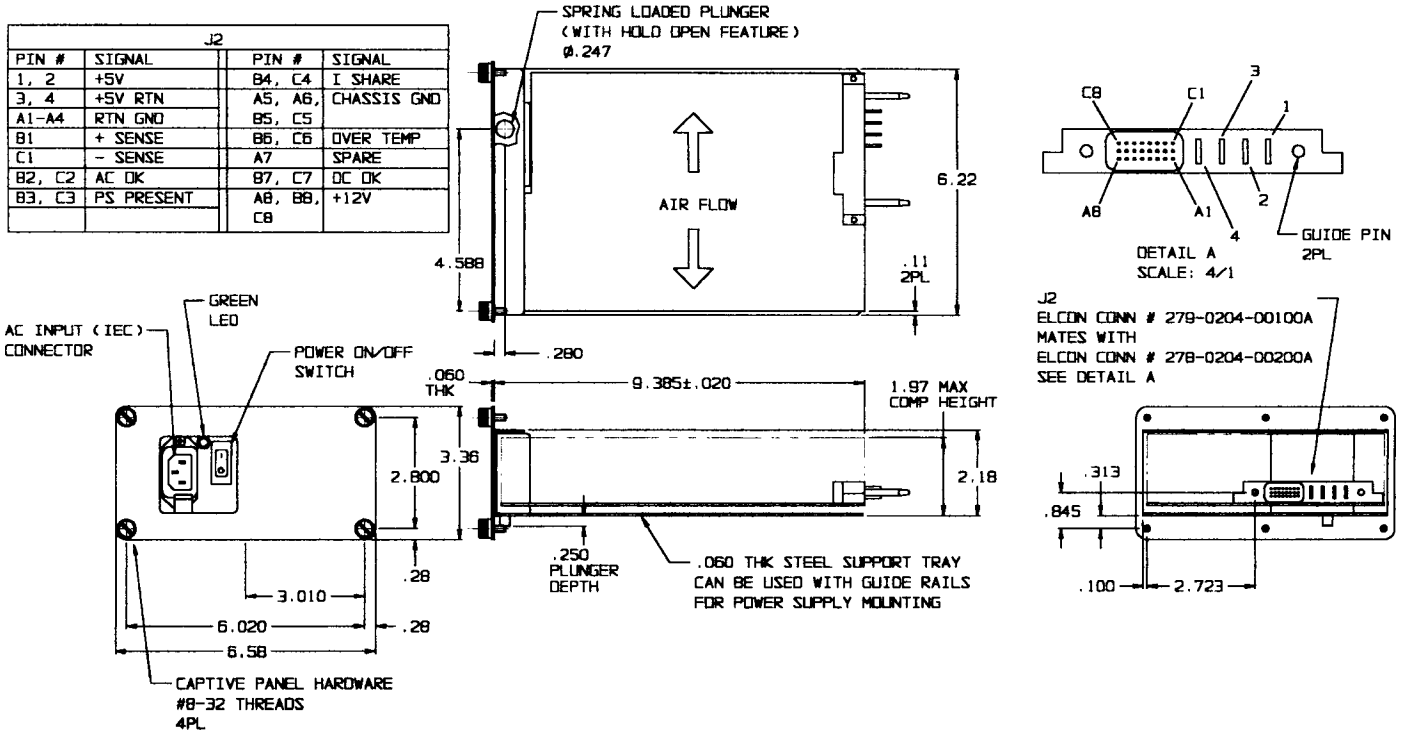
### WEST COAST:

599 N. MATHILDA AVENUE  
SUNNYVALE, CALIFORNIA 94086  
TEL (408) 732-1230 FAX (408) 732-5712



# HSO-250 250 WATT COMPACT HOT SWAP

\* IN .PDF FORMAT, PRINT OR ZOOM TO SEE DRAWING



<b>Nominal Input Voltage</b>	115-240 VAC.	<b>Overvoltage Protection</b>	V1 voltage clamp factory set at 20% to 30% above output voltage. V2 failsafe design.
<b>Frequency</b>	47-63 Hz 400Hz. available.	<b>Overtemperature Protection</b>	Unit shuts down if overheated. Automatic recovery. Over temperature signal provided.
<b>Operational Input Voltage Range</b>	90 to 264 VAC	<b>Cooling</b>	User provides min. 60 CFM.
<b>Inrush Current</b>	Less than 40 A for 4 msec. @ 115 VAC, or 80 amperes @ 230 VAC.	<b>Input/Output Isolation</b>	4242 VDC, SELV construction.
<b>Fusing</b>	6.3 Ampere, 250 VAC, Internal ceramic body fuse.	<b>Remote Sense V1 Output</b>	Up to 0.5 volts total in load.
<b>Efficiency</b>	75% typical.	<b>Remote On/Off</b>	Standard - Open to run.
<b>Turn on time</b>	Less than 500 msec.	<b>Power Good or Power Fail</b>	Standard - Norm logic "1".
<b>Load Regulation</b>	1% for 10% to 100% load changes, all outputs. 10% min. load required on V1 for max load reg. on output V2 .	<b>Operating Temperature</b>	-20°C to 50°C full output. 50°C to 75°C, derate 2%/°C.
<b>Line Regulation</b>	± 0.5% over operating line range, all outputs.	<b>Stability</b>	All outputs 0.5% for 8 hrs. after 1 hour warm-up.
<b>Ripple &amp; Noise</b>	1% ripple, 1% noise or 100MV which ever is greater. 20MHz bandwidth.	<b>Humidity</b>	Up to 95% non-condensing.
<b>Transient Response</b>	Output maximum excursion of ± 5% for 25% load step. Recovery less than 500 µsec.	<b>EMI</b>	Meets FCC Class A and EN55022 Level A
<b>Short Circuit and Overload Protection</b>	All outputs are protected from short circuit and overload. Automatic recovery.	<b>Size</b>	6.58" by 3.36 x 9.39".
<b>Overshoot</b>	No turn-on or turn-off overshoot.	<b>Weight</b>	5 lbs.