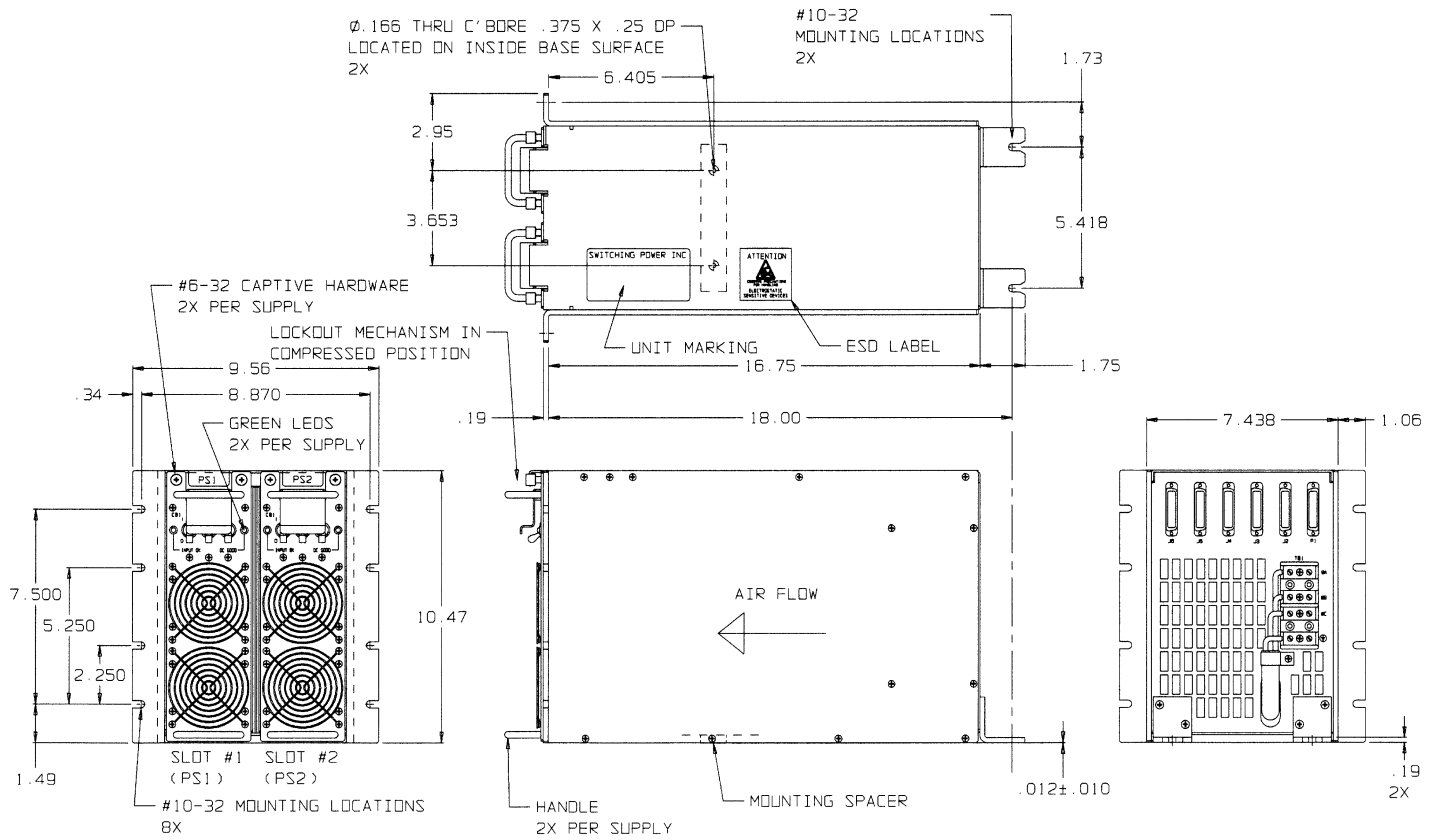


HOT SWAP RACK MODEL NOC-270-RK



- ◆ 270 WATT HOT SWAP RACK SYSTEM USING TWO **NOC-270F** MODULES
- ◆ POWER FACTOR CORRECTED INPUT, 187-264VAC THREE PHASE INPUT
OPERATION UP TO 15,000 Ft / 65°C AMBIENT
- ◆ LEDS INCLUDED INDICATE INDIVIDUAL POWER SUPPLY STATUS
- ◆ N+1 REDUNDANCY PROVIDED WITH INTEGRAL "ORING" DIODES
- ◆ EASY INPUT / OUTPUT CONNECTIONS PROVIDED
- ◆ THE RACK IS CONFIGURED SUCH THAT A MODULE MUST BE TURNED OFF



CONNECTOR J1, 25 POSITION 'D' SUBMINATURE PLUG	
PIN #	FUNCTION
1	FLAG_DCDK01
2	FLAG_DCDK02
3	NOT USED
4	NOT USED
5	NOT USED
6	NOT USED
7	NOT USED
8	NOT USED
9	NOT USED
10	NOT USED
11	NOT USED
12	NOT USED
13	NOT USED
14	NOT USED
15	NOT USED
16	NOT USED
17	NOT USED
18	NOT USED
19	NOT USED
20	NOT USED
21	NOT USED
22	FLAG_DCDK01_RTN
23	FLAG_DCDK02_RTN
24	NOT USED
25	NOT USED

CONNECTOR J2, 25 POSITION 'D' SUBMINATURE RECEPTACLE	
PIN #	FUNCTION
1	+28V
2	+28V
3	+28V
4	+28V
5	+28V
6	+28V
7	NOT USED
8	+28V RTN
9	+28V RTN
10	+28V RTN
11	+28V RTN
12	+28V RTN
13	+28V RTN
14	+28V
15	+28V
16	+28V
17	+28V
18	+28V
19	NOT USED
20	NOT USED
21	+28V RTN
22	+28V RTN
23	+28V RTN
24	+28V RTN
25	+28V RTN

CONNECTOR J3, 25 POSITION 'D' SUBMINATURE RECEPTACLE	
PIN #	FUNCTION
1	+5V
2	+5V
3	+5V
4	+5V
5	+5V
6	+5V
7	NOT USED
8	+5V RETURN
9	+5V RETURN
10	+5V RETURN
11	+5V RETURN
12	+5V RETURN
13	+5V RETURN
14	+5V
15	+5V
16	+5V
17	+5V
18	+5V
19	NOT USED
20	NOT USED
21	+5V RETURN
22	+5V RETURN
23	+5V RETURN
24	+5V RETURN
25	+5V RETURN

CONNECTOR J4, 25 POSITION 'D' SUBMINATURE RECEPTACLE	
PIN #	FUNCTION
1	+15V
2	+15V
3	+15V
4	+15V
5	+15V
6	+15V
7	NOT USED
8	+15V RETURN
9	+15V RETURN
10	+15V RETURN
11	+15V RETURN
12	+15V RETURN
13	+15V RETURN
14	+15V
15	+15V
16	+15V
17	+15V
18	+15V
19	NOT USED
20	NOT USED
21	+15V RETURN
22	+15V RETURN
23	+15V RETURN
24	+15V RETURN
25	+15V RETURN

CONNECTOR J5, 25 POSITION 'D' SUBMINATURE RECEPTACLE	
PIN #	FUNCTION
1	-15V
2	-15V
3	-15V
4	-15V
5	-15V
6	-15V
7	NOT USED
8	-15V RETURN
9	-15V RETURN
10	-15V RETURN
11	-15V RETURN
12	-15V RETURN
13	-15V RETURN
14	-15V
15	-15V
16	-15V
17	-15V
18	-15V
19	NOT USED
20	NOT USED
21	-15V RETURN
22	-15V RETURN
23	-15V RETURN
24	-15V RETURN
25	-15V RETURN

CONNECTOR J6, 25 POSITION 'D' SUBMINATURE RECEPTACLE	
PIN #	FUNCTION
1	-50V
2	-50V
3	-50V
4	-50V
5	-50V
6	-50V
7	NOT USED
8	-50V RETURN
9	-50V RETURN
10	-50V RETURN
11	-50V RETURN
12	-50V RETURN
13	-50V RETURN
14	-50V
15	-50V
16	-50V
17	-50V
18	-50V
19	NOT USED
20	NOT USED
21	-50V RETURN
22	-50V RETURN
23	-50V RETURN
24	-50V RETURN
25	-50V RETURN

TB1- PRESSURE PLATE TERMINAL BLOCK, ACCEPTS #2 THRU #14 COPPER WIRE	
PIN #	FUNCTION
1	PHASE A
2	PHASE B
3	PHASE C
4	GROUND

INTERNAL ELCON CONNECTOR INTERFACE (SUPPLIES TO RACK)			
PIN #	SIGNAL	PIN #	SIGNAL
1	PHASE A	13	I-SHARE
2	PHASE B	14	+15V
3	PHASE C	15	+15V
4	CASE GND	16	N/C
5	N/C	17	-15V/50V RTN
6	N/C	18	-15V/50V RTN
7	N/C	19	-15V/50V RTN
8	FLAG_DCDK	20	-15V
9	FLAG_DCDK_RTN	21	-15V
10	N/C	22	-50V
11	+15V RTN	23	+5V +SENSE
12	+15V RTN	24	+5V -SENSE
		25	N/C
		26	+5V
		27	+5V RTN
		28	+28V
		29	+28V RTN